

Installation Guide: SilentFiber™ Studio Kit

Wall Mounting the SilentFiber™ Studio Kit

- 1.) Locate the area on the wall where the each column and block will be placed - blocks should be placed on the back wall behind the listening position, and columns should be placed along the walls at reflection points, and behind the sound source.
- 2.) Clean the wall with a damp rag or duster - be sure there is no dust or dirt in the area where the panels will be hung.
- 3.) Before fixing the panels to the wall, score a pencil mark at the top of each panel where they will be placed - make sure each column has 1-3' of space in between.
- 4.) Peel the white film off of the backing to expose adhesive layer.
- 5.) Place each panel in the proper spot, pressing firmly around the edges for up to 60 seconds.

For Concrete Surfaces:

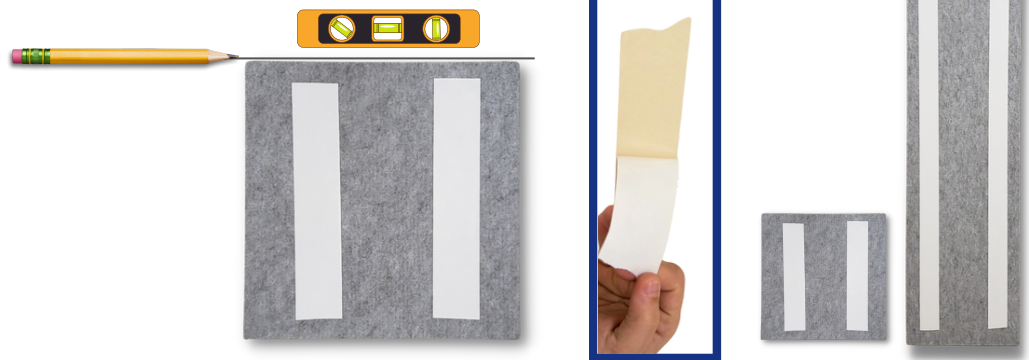
- Glues and adhesives can be used to adhere to concrete surfaces

kits can be combined for coverage of larger spaces



Clean the wall or surface

Make sure each panel is level and properly spaced out



Peel the adhesive backing



1215 Valley Belt Rd. STE B
Brooklyn Heights, OH 44131
+1 (877) 399-9697

info@soundacousticsolutions.com
www.soundacousticsolutions.com