

Measurement for Installation

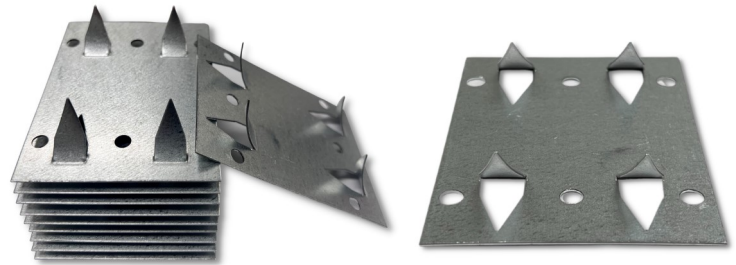
1. Measure length of wall where panels will be hung
2. Determine number of panels that will fit on each wall or row
3. Subtract the panel length from wall length for total space available
4. Spread the open space evenly amongst all panels
5. Mark location of panel mounts along entire wall or row. At end of wall, double-check that spacing is still in line.
6. Press the acoustic panel

Wall Mounting: Clips should be mounted, centered to desired mounting location with the top row of impaling clips mounted in the top ¼ region of the panel. Locate the mounting location and the location of the center of the panel and use glue, screws or nails to mount. Clips should be 6" from the panel edges.

- a. Use (2) impaling clips for 2'x2' panels
- b. Use (4) impaling clips for 2'x4' and 4'x4' panels
- c. Use (6-8) impaling clips for 4'x8' panels
- d. For wood-framed panels, add an additional (2) impaling clips

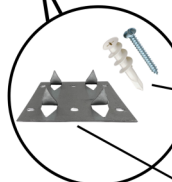
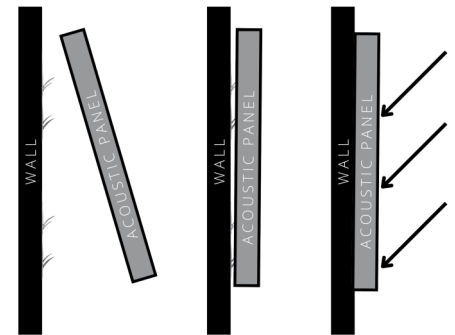
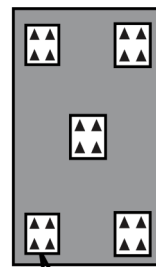
For Drywall: drill holes large enough to accommodate the dry-wall anchors. Tap the anchors in by using a hammer, then screw the impaling clips to the anchors using matching screws.

Ensure the impaling clips are securely fastened to the wall by tugging them with moderate force. Position the panel in place an inch and a half above the desired mounting height. Ensure none of the impaling clips are encumbered in any way by the fabric. Firmly press the panel towards the wall while applying downward force. Use a level to ensure the mounting is level.



4-Prong Impaling Clip Installation

Hang impaling clips on the wall, evenly across panel



Screws/Hardware
drywall anchors required for drywall applications

4-Prong Impaling Clip



Adhesives may be used for additional reinforcement

For more information, please visit us at:

www.SoundAcousticSolutions.com

1215 Valley Belt Road, Suite B

Brooklyn Heights, OH 44131

Toll Free: (877) 399-9697