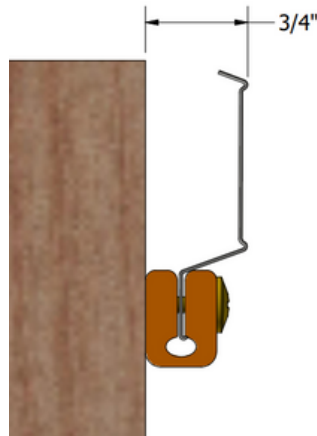


The RC-1 Boost, manufactured by PAC International is designed for use with any wood or steel application where noise control is required. This includes wood framed or steel framed wall and ceiling systems. The RC-1 Boost product decouples Generic RC-1 channel from the framing, enhancing the acoustical performance of RC-1 channel's acoustical performance. With an Acoustical design load rating of 18 lbs. per isolator, the RC-1 Boost clip can support up to two layers of 5/8" gypsum board when spaced no more than 16" x 24" oc. Final span of the RC-Boost isolators is determined by the UL Fire Resistive Design specifications. The RC-1 Boost clip Wraps around the screw edge of standard RC channel. The RC-1 Boost is screwed to the framing using the PAC International supplied RC-1 Boost Screw. The RC-Boost decouples the gypsum board from the structure stopping STC and IIC vibrations from entering the space adjacent. RC-1 Boost screw specifically designed to enhance the acoustical performance of the RC-1 Boost isolator. No substitutions allowed.

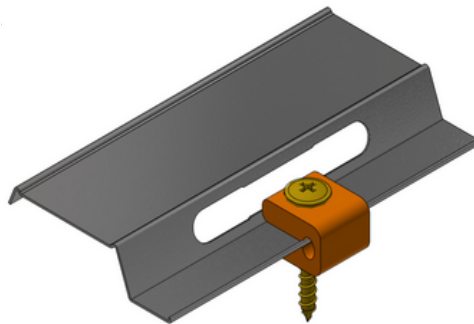
### Specifications:

- Acoustical Design Load: Up to 18 lbs.
- Total Deflection: 2 mm
- Double Deflection: Yes (1 mm)
- Low VOC: Yes
- Adjustable: No
- Cavity Min: 3/4"
- Cavity Max: 3/4"
- Adjustment Limit: N/A
- Use on Ceilings: Yes
- Use on Walls: Yes
- New Construction: Yes
- Retro Fit: Yes
- MADE IN USA - PAC International



### Applications:

- Wood, Steel, Metal and Concrete
- Shared Living Spaces
- Commercial Buildings
- Retail Spaces
- Recording Studios
- Home and Commercial Theaters
- Office Buildings



**Request a FREE quote today!**

[www.SoundAcousticSolutions.com](http://www.SoundAcousticSolutions.com)

[info@soundacousticsolutions.com](mailto:info@soundacousticsolutions.com)

+1 (877) 399-9697



### Technical Data:

- ASTM E90
- ASTM E413

Technical Specification